

TURKU PC104

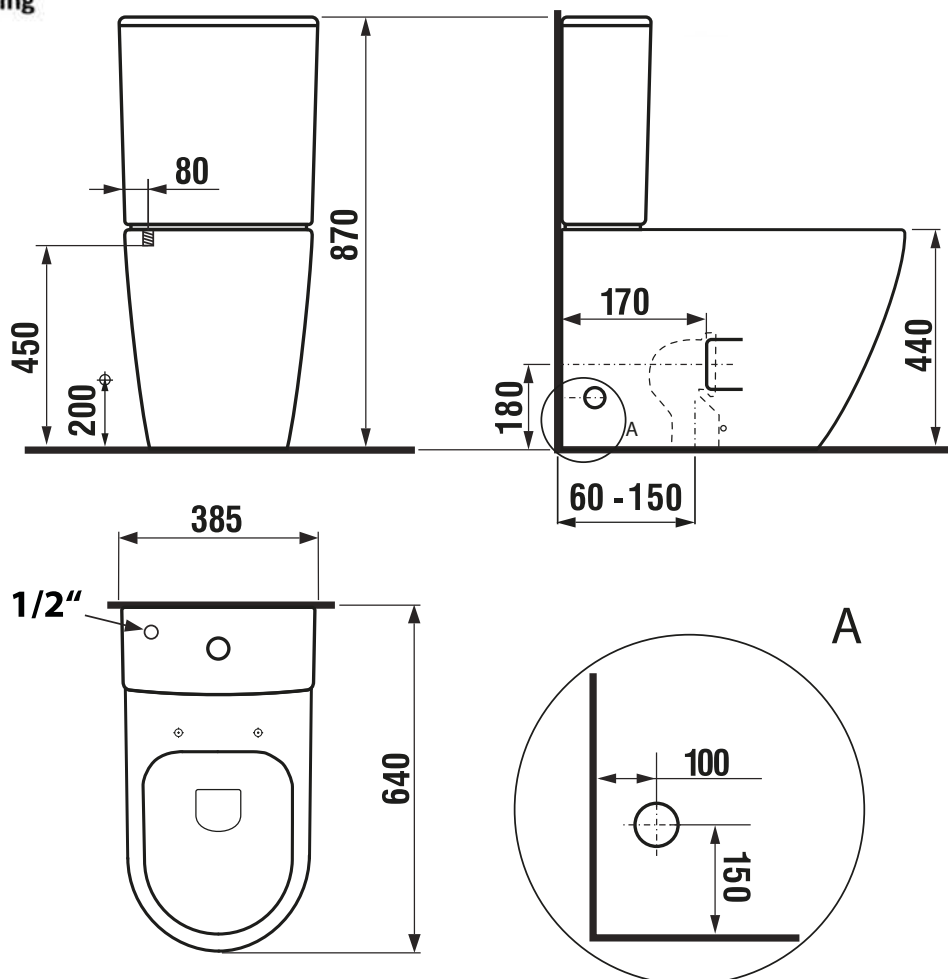
WC pan raised S-trap/P-trap, cistern with flush mechanism



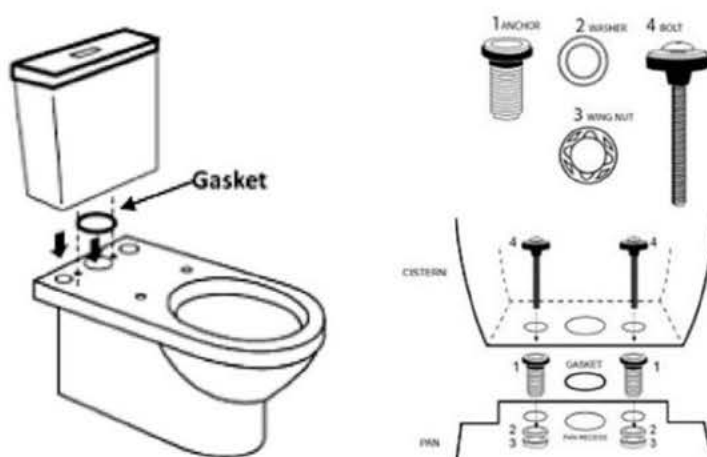
Installation manual

- Before you begin, carefully inspect the new toilet for visible damage or manufacturing faults.
- Read the installation manual before you proceed to installation.
- In the case of use of toilet for handicapped, the distance from the front edge of the bowl to the wall must be at least 70 cm. It is necessary to adapt building readiness (*).

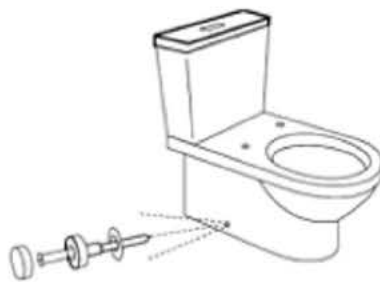
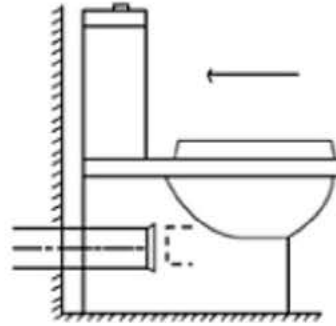
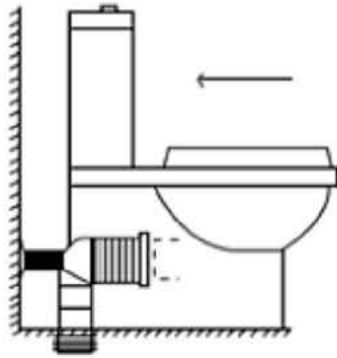
Technical drawing



- Assemble the cistern to the pan



Possibility of changing to S-trap by adding WC flexible connection (not included)



Important:

- Do not use abrasive cleaners/materials .

Warranty conditions:

Warranty does not cover:

- Defects caused by the installation contrary to content of the manual.
 - Damage caused as a result of modifications and design changes made by the user or any third party.
 - Mechanical damages.
 - Valve malfunction due to pollution caused by chemical agents dispensed into tank.
-